

# C12B0

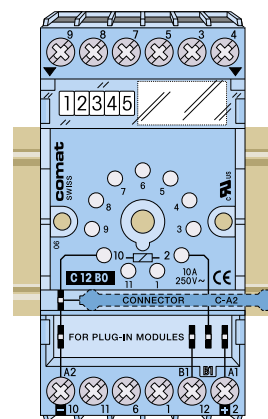
## Socket for 11 pin plug-in relays C3, C31, C32 and plug-in control modules



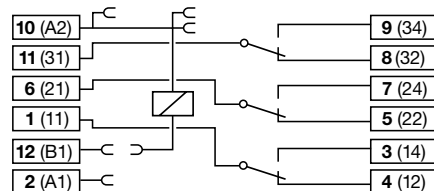
<b>Type:</b>	<b>C12B0 R</b> 3-pole, 1 level Module slot for timer- and monitoring modules, over voltage suppressing- and LED indicator modules coil bridge bus bar to connect in A2
<b>Rated current</b>	<b>10 A</b>
<b>Specifications</b>	<p>Rated load 10 A / 400 V (cURus: 250 V)</p> <p>Insulation Test voltage <math>V_{rms}</math> / 1 min 2,5 kV</p> <p>– All terminals/DIN rail 2,5 kV</p> <p>– Terminal/terminal 2,5 kV</p> <p>Cross-section of connecting wire</p> <p>– Single-wire 1 x 6 mm<sup>2</sup>, 2 x 1,5 mm<sup>2</sup></p> <p>– Multi-wire 1 x 4 mm<sup>2</sup>/AWG12, 2 x 1,5 mm<sup>2</sup>/AWG16</p> <p>Max. screw torque 0,7 Nm</p> <p>Screw dimensions M3, Pozzi, slot</p> <p>Labelling space detachable</p> <p>Connection label 1...12; DIN/EN</p> <p>Mounting DIN rail TS35 or panel mounting 1 x M4</p> <p>Ambient temperature operation/storage -25 (no ice)...60 °C / -40 ... 80 °C</p> <p>Weight 61g</p>

**Associated plug-in 11-pin relays** **C3, C31, C32**

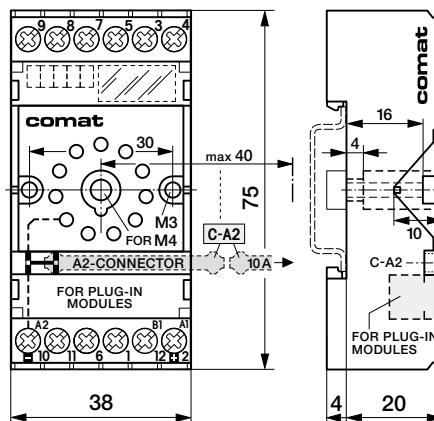
<b>Accessories</b>	<p>Retaining springs, steel</p> <p>Coil bridge bus bar</p> <p>Marking strip cardboard white 8 x 16</p>
	<p><b>HF-32</b> (Relays C31, C32)</p> <p><b>S3-C</b> (Relays C3)</p> <p><b>S3-CT</b> (Timecube + Relays C3)</p> <p><b>HF-33</b> (Timecube + Relays C31, C32)</p> <p><b>C-A2</b></p> <p><b>L-16/1</b> (under transp. plastic cover)</p>



### Connection diagram



### Dimensions [mm]



### Technical approvals, conformities

