

B103

Power relay with 1-pole change over contact DIN Rail mounting according to DIN 43 880

Type: B103/...V R

Power relay
1 change over contact
8 ... 240 V, UC / AC control voltage
LED status indicator
Wash tight relay built in
Also suitable for panel mounting 2 x M4

Maximum contact load	10 A 250 V AC-1, 6 A 25 V DC-1
Recommended minimum contact load	10 mA / 12 V

Contacts

Type	Single contact micro disconnection
Material	AgSnO ₂
Rated operational current	10 A
Max. inrush current (10ms)	16 A
Max. switching voltage AC-1	250 V
Max. AC load	2500 VA AC-1
Max. DC load 24V/220V (Fig. 2)	150 W / 50 W

Control input V_n =

	DC 12 V	UC 24 V	UC 48 V	AC 110 - 127 V 50Hz/60Hz	AC 220 - 240 V 50Hz/60Hz
Operating voltage range [V]	7.5 ... 15	19 ... 29	38 ... 57	90 ... 150	190 ... 265
Input current @ V _{nom} [mA]	≤ 100	≤ 25	≤ 15	≤ 25 / 30	≤ 25 / 30
Release voltage [V]	≥ 2	≥ 3.5	≥ 6	≥ 12 / 10	≥ 20 / 18
Nom. power consumption [W]	≤ 0.9/1.2	≤ 0.5/0.6	≤ 0.7/0.8	≤ 0.8/1.2	≤ 0.8/1.2
Inductive turn-off voltage	None	None	None	None	None

Insulation

Test voltage open contact	1 kVrms
Test voltage between contacts and coil	2 kVrms 1 minute

General Specifications

Ambient temperature storage/operation	-40 ... +85 °C / -25 ... +60 °C
Response time AC/DC	20 ms / 7 ms
Release time	5 ... 12 ms
Bounce time NO/NC contact	typ. 0.5 ms / 3 ms
Mechanical life	≥ 20 x 10 ⁶
Conductor cross section	Stranded wire 2.5 mm ² , 2 x 1.5 mm ²
Ingress protection degree	Housing: IP 40, terminals: IP 20
Max. Screw torque	0.4 Nm
Housing material	Lexan
Weight	50 g

Standard types

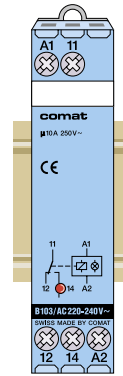
UC (AC / DC) 50/60Hz: 8-12, 24, 48
AC 50 / 60 Hz: 110-127, 220-240

B103/UC ...V R
B103/AC ...V R

"..." enter the voltage for full type designation

Accessories

Label plate: **BZS-DIN17.5**



Connection diagram

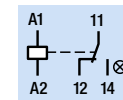


Fig.1 AC voltage endurance 250 V AC-1

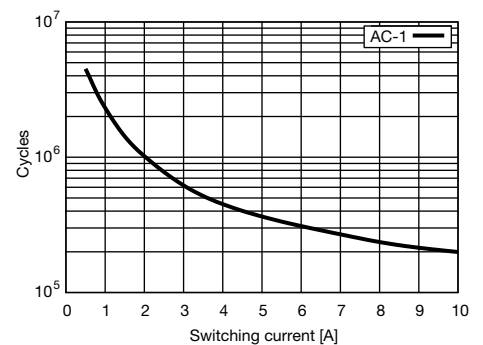
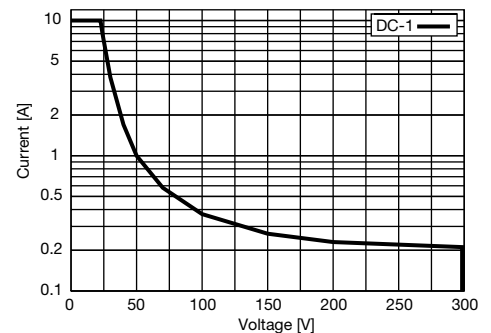
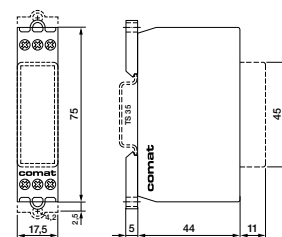


Fig. 2 DC load limit curve DC-1



Dimensions [mm]



Technical approvals, conformities

