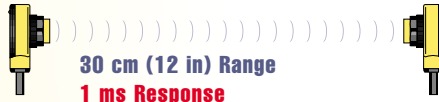


T18U: Ultimate versatility in opposed ultrasonic sensors

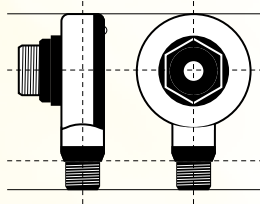
Reliable sensing of clear materials.

High frequency acoustic emitter and tuned receiver are ideal for sensing under bright lighting and for reliably detecting clear materials such as glass. They operate from 12-30 V dc with current-sinking (NPN) or current-sourcing (PNP) complementary outputs to interface with a wide variety of loads.



Dual ranges & response times.

Choice of two ranges and two response times in the same units for the ultimate in versatility. Choose a response time of 2 ms and range of 60 cm (24 in) for longer ranges or simply reverse the polarity and achieve ultra-fast response of 1 ms with a range of 30 cm (12 in) for high speed applications such as counting.



Popular patented housing.

T-style right-angle sensor package with 18 mm threaded mounting hub allows more versatile mounting utilizing less space. Measures only 40 mm (1½ in) in diameter and 30 mm (1¼ in) deep. Choose 4-pin euro-type quick disconnect for fast changeout, or prewired units.





T18U Sensor Models

Models*	Type	Range	Cable**	Supply Voltage	Output Type	Response Time
T186UE T186UEQ	Emitter	Normal sensitivity: 600 mm (24") High sensitivity: 300 mm (12")	2 m (6.5') 4-pin Euro QD	12 to 30V dc	–	Normal sensitivity: 2 milliseconds High sensitivity: 1 millisecond
T18VN6UR T18VN6URQ	Receiver		2 m (6.5') 4-pin Euro QD		Complementary NPN	
T18VP6UR T18VP6URQ			2 m (6.5') 4-pin Euro QD		Complementary PNP	

* Sensor pair requires one emitter and one receiver.

** 9 m (30') cables available by adding suffix "W/30" to the model number of any cabled sensor. A model with a QD connector requires a mating cable (page 36).

T18U Specifications

Response speed	1 ms or 2 ms, depending wiring configuration
Environmental rating	IP67, NEMA 6P
Data sheet reference Download at www.baneng.com	40124

